



## Copenhagen / Kastrup Airport - EKCH

---

Version 1.3  
Last updated 22.08.2024

# 1. Arrival Procedures

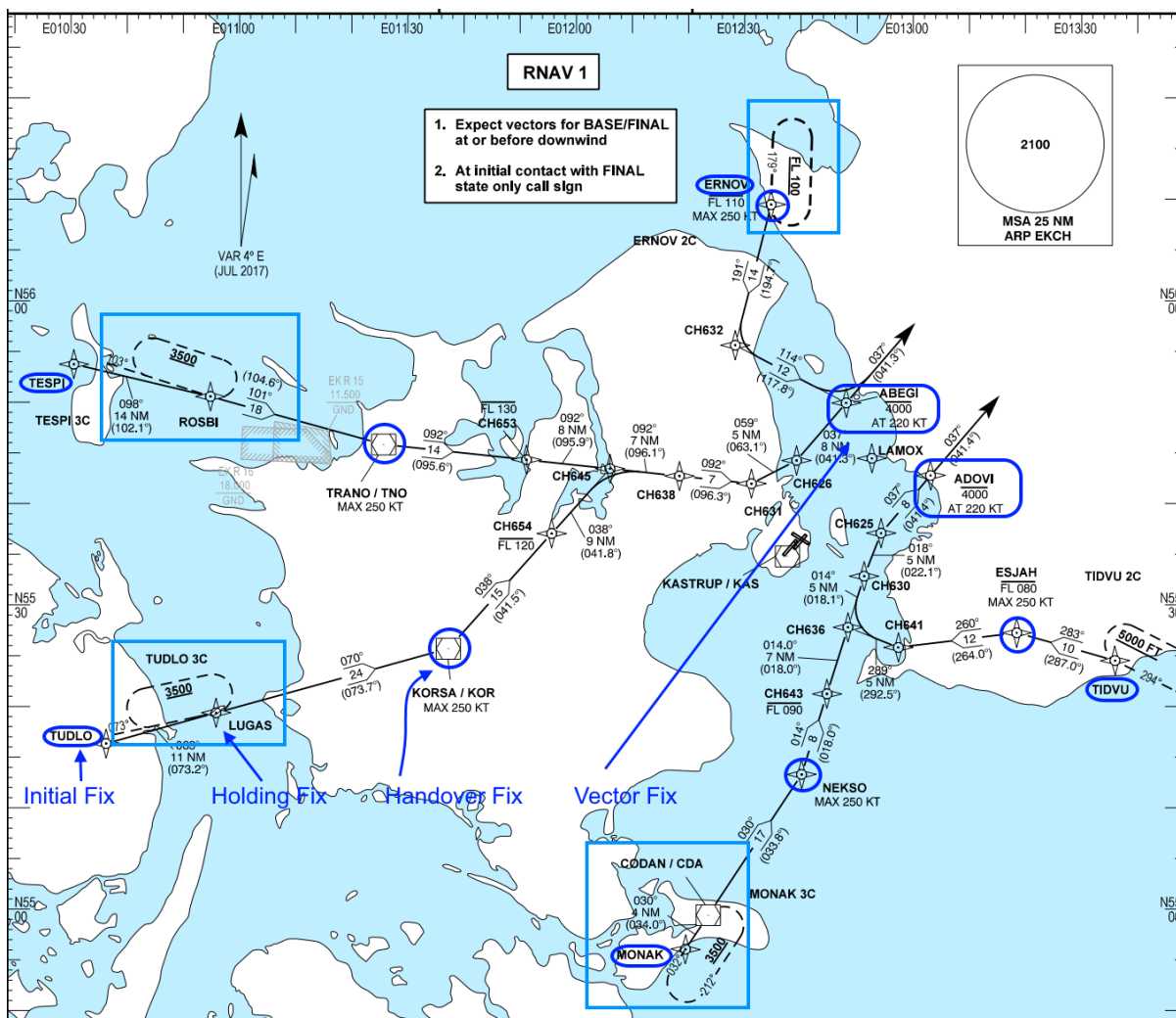
As your flight approaches EKCH, there are a few items you should be familiar with before commencing your Approach:

## 1.1 STAR

Arrivals into Copenhagen comes from 5 directions, and all have following items to know (visualized in Figure 2):

- **Initial fix**  
Also the name of the STAR
- **Holding fix**  
Where the holdings are on the arrivals
- **Handover fix**  
Where you are handed over to APP
- **Path to the Vector fix**  
Path until the arrival culminates in a vector

STAR designation		
Runway 04R	A	e.g. TUDLO2A
Runway 04L		
Runway 12	B	e.g. TUDLO2B
Runway 22R	C	e.g. TUDLO2C
Runway 22L		
Runway 30	D	e.g. TUDLO2D



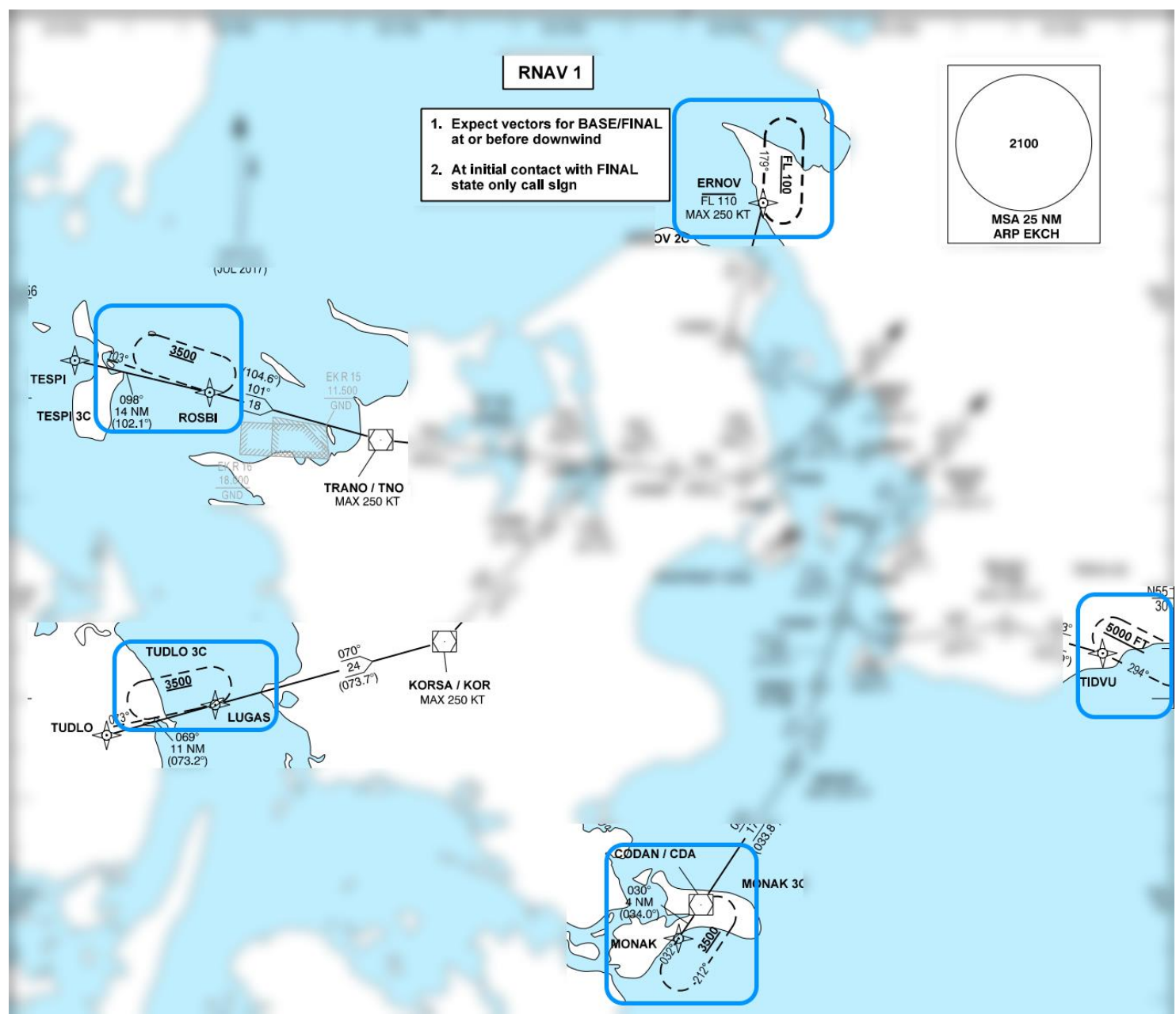
## 1.2 Holdings

Every STAR has a holding, either on the first or second point on the STAR. You can expect holdings in peak hours

STAR	Point of Holding	Inbound course	Turn to the:	Time of leg
TESPI	ROSBI	103°	←Left	1 min
TUDLO	LUGAS	073°	←Left	1 min
MONAK	CODAN (CDA)	032°	Right→	1 min
TIDVU	TIDVU	294°	Right→	1 min
ERNOV	ERNOV	179°	←Left	1 min

Especially STAR  
**MONAK**  
is subject to holdings

You can reduce to  
**Minimum clean speed in holding**



### 1.3 Path after handover to APP

When handed over to APP you will continue to fly on the **RNAV arrival** until you reach the “Vector fix”. After you reach this fix you must

continue on the **Specified Vector** until you are turned in by APP!

Even if you don't hear anything you must continue on this **Downwind** heading as pr. The charts

Make sure you comply with all altitude and speed restrictions on the STAR, and advise Copenhagen Approach if you are unable

Note that:

- APP may clear you direct to another point on the STAR
- APP may take you on vectors and then later clear you to a point to rejoin the STAR
- You must **NEVER!!** Turn base from the STAR unless Approach has told you specifically by clearing you to a specific point or told you to fly a vector after a point.
- See below (Table 3) for instructions after the last point on your STAR

**Table 3**

Associated Runway	Vector point Left downwind	Vector point Right downwind	Vector to follow after vector point
<b>22L/22R</b>	ADOVI	ABEGI	<b>037 °</b>
<b>04L/04R</b>	ERPUK	DOPEM	<b>217 °</b>
<b>12</b>	FEDJO	AGTIC	<b>299 °</b>
<b>30</b>	COPHO	HUFOH	<b>119 °</b>

*Speed 220 knots or less and 4000 or below at any vector point*

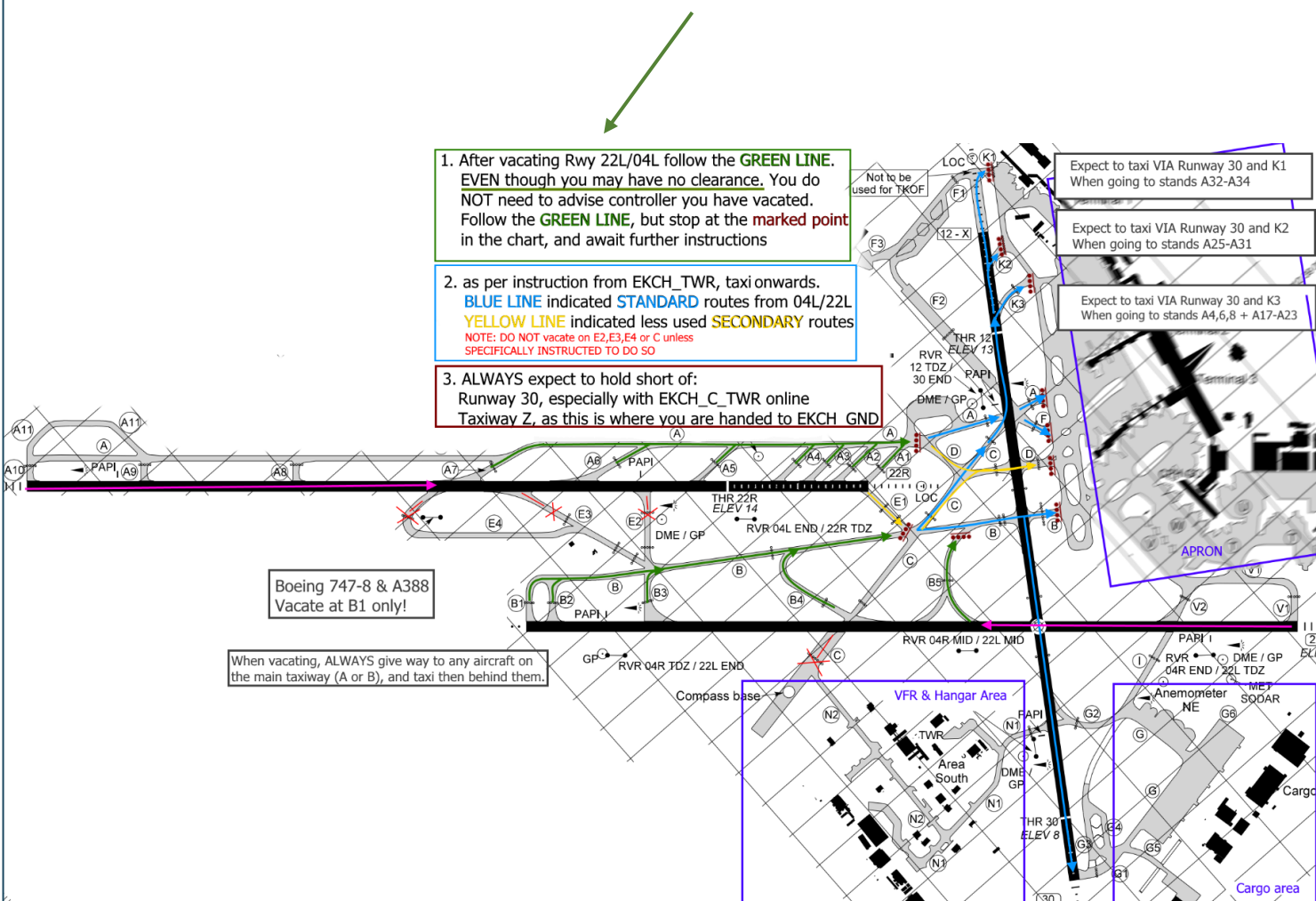
### 1.4 Frequencies for arrivals

Control	EKDK_B_CTR	<b>119.555</b>	MONAK STARs below FL285 Responsible for TUDLO/TESPI STARs below FL245/FL285 Departures via NEXEN/LANGO and Arrivals via TUDLO Departures via NEXEN/LANGO and Arrivals via TUDLO
Control	EKDK_D_CTR	<b>133.155</b>	
Control	EKDK_I_CTR	<b>121.380</b>	
Control	EKDK_E_CTR	<b>123.730</b>	
Approach	EKCH_W_APP	<b>119.805</b>	Arrivals from TESPI/TUDLO/ERNOV Arrivals from MONAK/TIDVU Director, from abeam airfield. Contact with <u>callsign only</u> All Departures when online.
Approach	EKCH_O_APP	<b>118.455</b>	
Approach	EKCH_F_APP	<b>120.205</b>	
Departure	EKCH_K_DEP	<b>124.980</b>	
Tower	EKCH_A_TWR	<b>118.105</b>	All arrivals on main runways (22L/04L) Ground movement tower for Runway 12/30 Arrivals on parallel runways (22R/04R)
Tower	EKCH_C_TWR	<b>118.580</b>	
Tower	EKCH_D_TWR	<b>119.355</b>	
Apron	EKCH_A_GND	<b>121.630</b>	Apron area east of Runway 12/30 excl. Cargo apron Apron area east of Runway 12/30 excl. Cargo apron
Apron	EKCH_D_GND	<b>121.730</b>	

- ✓ Make sure to listen or downlink the **ATIS** before checking in with approach
- ✓ Expect an ILS approach. Visual approaches to be offered if weather and traffic conditions allows.
- ✓ Advise ATIS letter and A/C type at first contact with EKCH\_W\_APP/EKCH\_O\_APP
- ✓ During certain times you may get a short approach from 6 NM. Plan accordingly
- ✓ Runway 12/30 is ONLY used with strong crosswinds on primary runways, however 30 may be given on request if wind and traffic condition allows.
- ✓ If flying at a large event such as RTE, Overload CTP, CPH LIVE: Please inform yourself of Holdings and frequencies to be maximum prepared. It may be busy.

## 1.5 Arrival taxi

Follow the steps below to get guided correctly in to your stand!

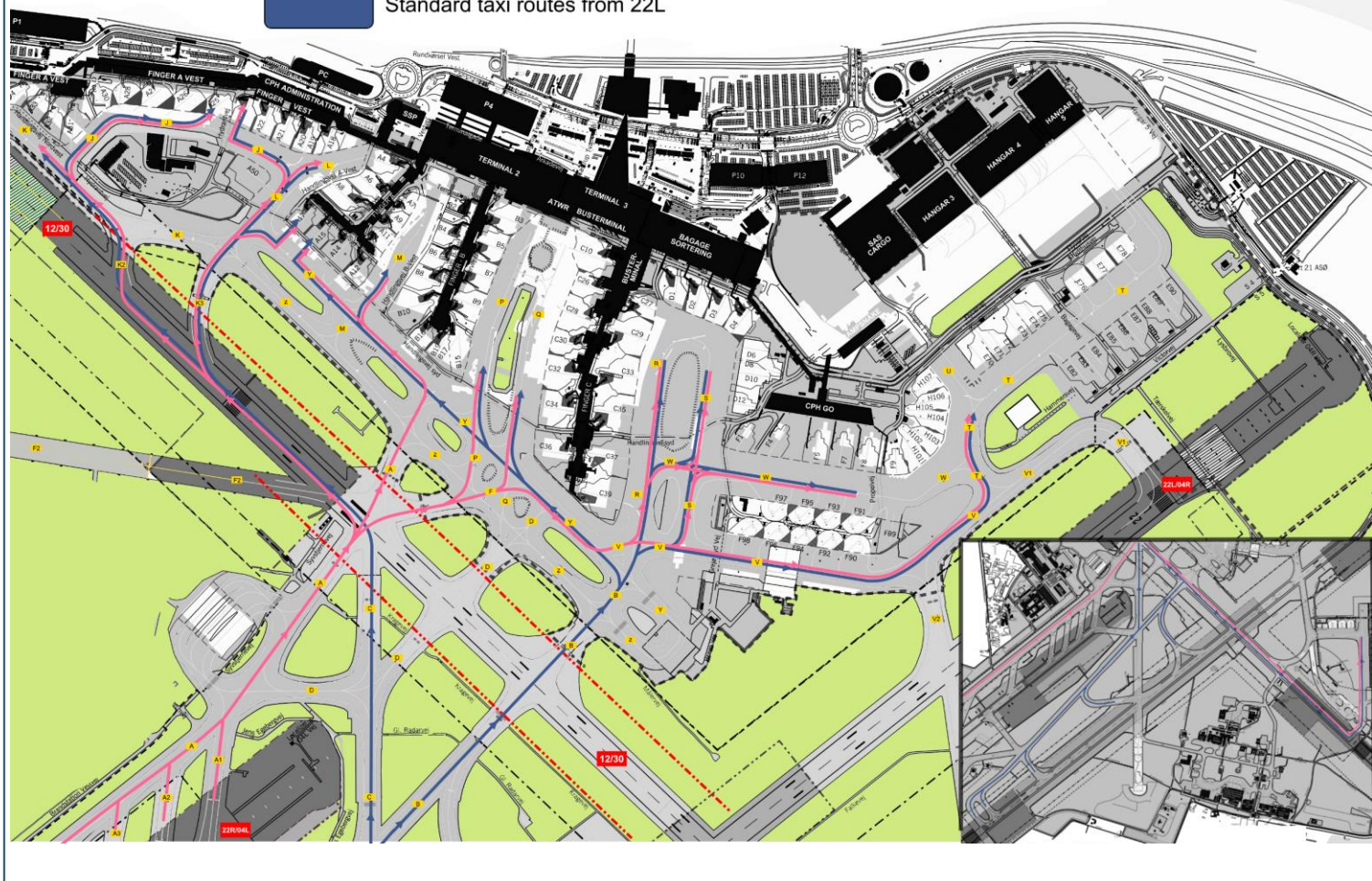


### Phraseology examples

Ldg Rwy	All stands except A4,6,8+A17-A34	A4,6,8+A17-A34	Other possibilities
22L	"taxi via B, cross Runway 30, hold short of Z"	"Taxi via B, C, Runway 30 and K3, hold short of Z"	Taxi via B, C and D, cross runway 30, but hold short Z"
04L	"Taxi via A, cross Runway 30 via F, but hold short of Z"	"Taxi via A, Runway 30 and K3, hold short of Z"	Taxi via A, Cross Runway 30 Hold short of Z"

## Standard Inbound Taxi routes

- Standard taxi routes from 04L
- Standard taxi routes from 22L



## 2. Stands and Parking

A complete standalone guide for parking is located at the end of the document under [Appendix 1](#).

A standalone document is also located on the website.

## 3. Departure Procedures

### 3.1 ATC clearance

Getting ready for departure you need to get the clearance frequencies for departure are as follows

ATIS	EKCH_D_ATIS	122.855	Make sure you get the DEP ATIS on this frequency for ATC clearance. PDC available online when traffic demands.
Delivery	EKCH_DEL	119.905	
Sequencing	EKCH_S_GND	121.905	
Apron	EKCH_D_GND	121.730	Dedicated for Departures when online
Apron	EKCH_A_GND	121.630	Main frequency online
Tower	EKCH_C_TWR	118.580	12/30 area
Tower	EKCH_D_TWR	119.355	Departures
Tower	EKCH_A_TWR	118.105	Arrivals
Departure	EKCH_K_DEP	124.980	North/West Departures. Primary Fq
Departure	EKCH_R_DEP	120.255	South/East departures. Secondary fq
Approach	EKCH_W_APP	119.805	North/West Departures when DEP is offline
Approach	EKCH_O_APP	118.455	South/East Departures when DEP is offline

To get your clearance you must contact EKCH\_DEL or the next controller in line from the table above. When asking for your clearance you should also advise:

- Aircraft type
- ATIS letter
- QNH

*“Kastrup Delivery, SAS123, A320, information A, QNH1018, request clearance to London”*

### 3.2 Pushback

When ready for push and start you should be in touch with EKCH\_GND or the next controller in line from the table above. When asking for push and start you should advise

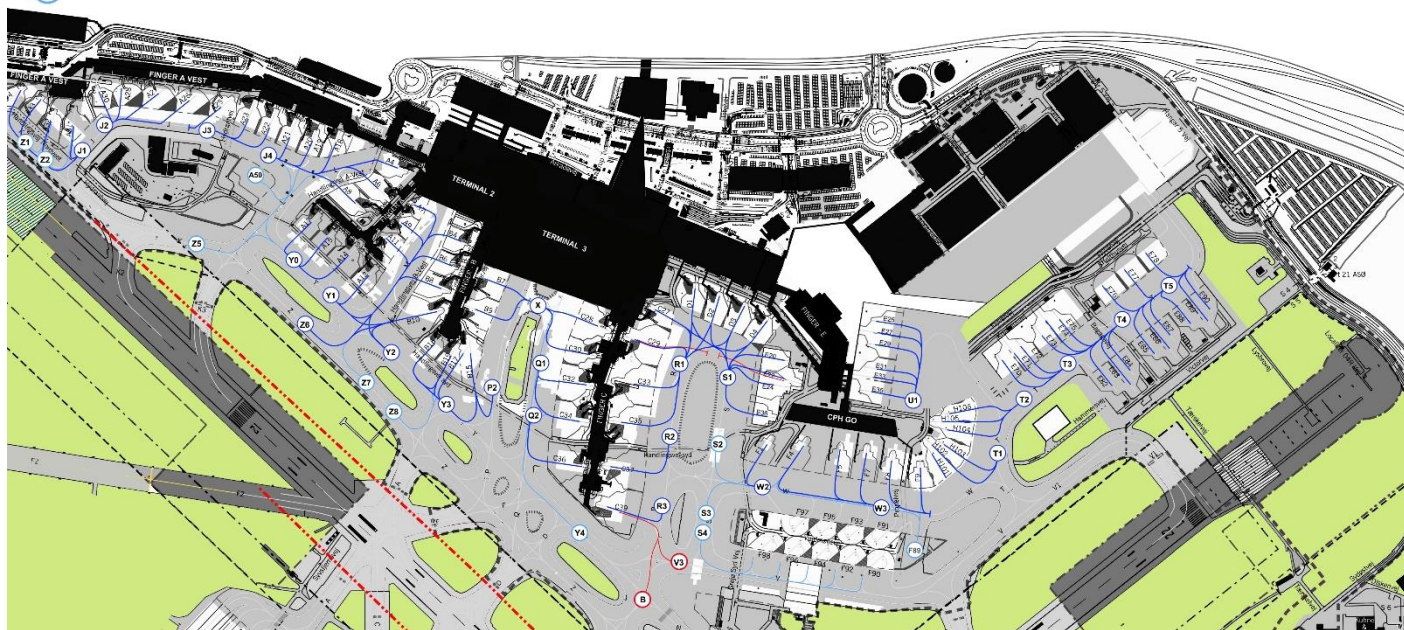
- Stand number
- If you are UNABLE to perform custom pushback
- This is Especially for when parked at: A7,A9,A11,B4,B6,B8,B10,C27,C29,D1-D4,

**You will possibly be given a Release Point which you can find in the graphic on the below**

When getting the push back clearance, make sure you:

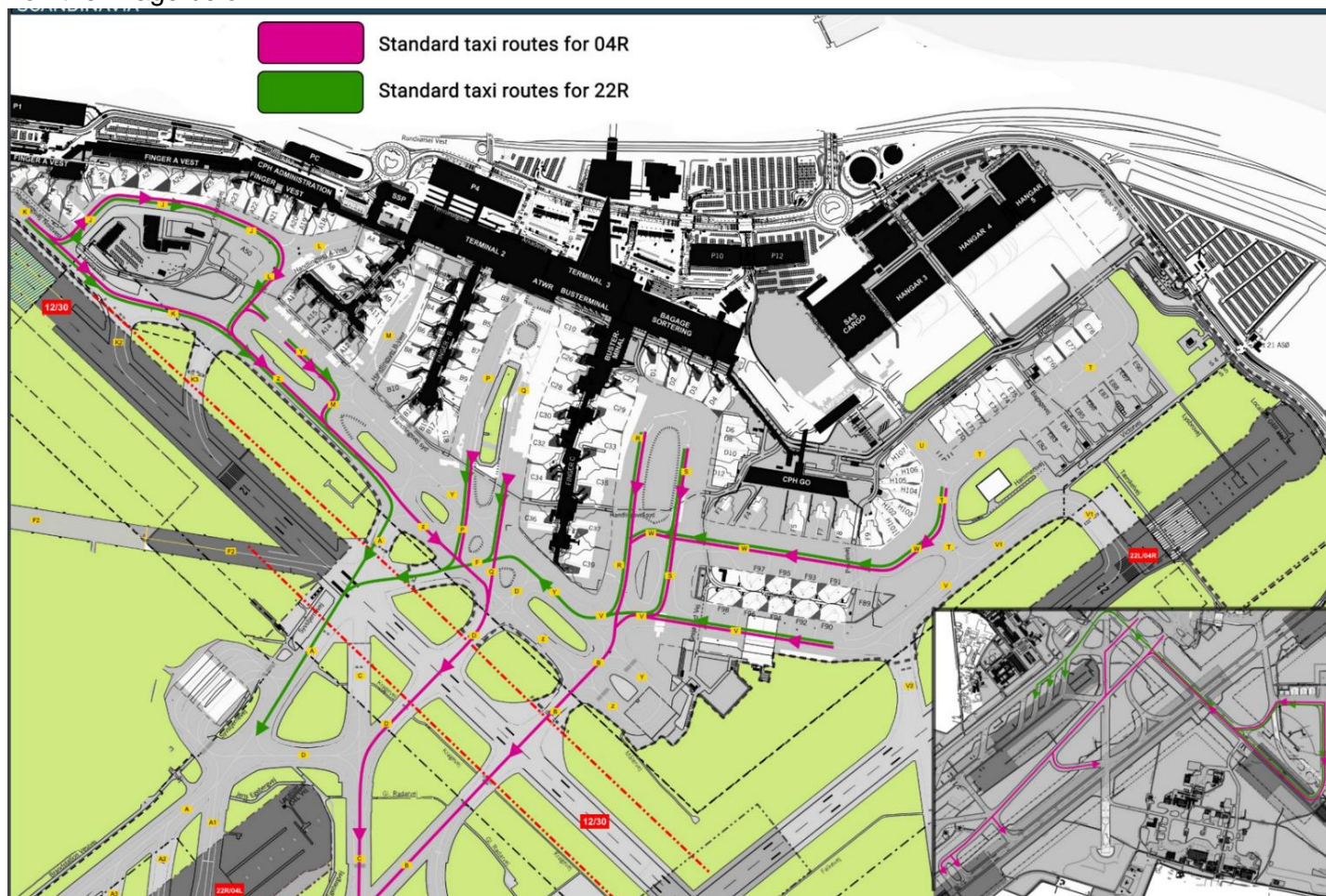
- Have understood it correctly
- Are facing the correct way
- Will begin pushback within a reasonable time.

- PRIMARY "RELEASE POINTS"
- SECONDARY "RELEASE POINTS"



### 3.2 Departure taxi

Like with arrival taxi there is procedure for taxiing on apron and at the runways. Notice the correct taxi route on the image below





### 3.3 SIDs & Departure

Kastrup airport has 10 SIDs all having following restrictions and functions. Look at table below

Direction	JET	PROP	Name	Initial Climb	Common destinations	Restrictions
North	YES	YES	VEDAR	FL70*	ENGM, East and North Norway	NO Danish destinations
Northwest	YES	YES	GOLGA		ENBR,ENZV,EKYT,BIKF,EKVG. US	NOT for ENGM
West	YES	YES	ODN		Ireland,North England, EKBI	
Southwest	YES	NO	NEXEN		EHAM,South England, Belgium,	JET ONLY!
	NO	YES	KOPEX		Same as NEXEN and LANGO	PROP ONLY!
	YES	NO	LANGO		Southern and western Europe	JET ONLY!
South/Southeast	YES	YES	BETUD		NONE!	NOT TO BE FILED!
	YES	YES	SALLO		South and southeast Europe thru Germany	SIMEG departures may NOT have SALLO in their flightplan
	YES	YES	SIMEG		East and southeast thru Poland	
East	YES	YES	KEMAX		Sweden, Finland, China, Japan, Russia	

**\*Initial climb from Runway 12/30 is 4000' on Copenhagen QNH**

As you see your chart and analyse it, be aware of the following items:

- Initial Climb clearance
- Speed Restrictions
- Routings
- Transition Altitude

[Download Charts!](#)

**INITIAL CLIMB**

**FL70**

4000' from Rwy 12/30

Transition Altitude

**5000'**

Passing 1000' you must **AUTOMATICALLY** contact the appropriate Departure Frequency as specified below

Priority	Callsign	Freq.	SID	Contact
ALWAYS when online contact:	EKCH_K_DEP	<b>124.980</b>	ALL SIDs	At 1000'
When EKCH_K_DEP is offline	EKCH_O_APP	<b>118.455</b>	KEMAX, SIMEG SALLO, NEXEN, KOPEX, LANGO, BETUD	At 1000'
	EKCH_W_APP	<b>119.805</b>	VEDAR,GOLGA,ODN	At 1000'
When <b>only</b> W_APP or O_APP is online	EKCH_W_APP EKCH_O_APP	<b>119.805</b> <b>118.455</b>	ALL SID	At 1000'

You should now be ready to depart on your IFR flight to or from Copenhagen.





Good wind!

VATSIM-Scandinavia

## 4. Appendix 1 – Stand Assignments

We have developed a design to help you locate the correct stand, Depending on airline and on if your flight is **INSIDE SCHENGEN** or **OUTSIDE SCHENGEN**

	SCHENGEN	NON-SCHENGEN
E.U Countries 	ALL OTHER	-Ireland -Cyprus
NON-EU Countries 	-Iceland -Switzerland -Faroe Islands -Norway -Greenland	ALL OTHER Including United Kingdom
Park at:	SCHENGEN or FLEX stands	NON-SCHENGEN or FLEX stands

**Click on each section** to get a detailed overview of the different stand sections.

**A - Gates**  
Schengen Departures ONLY!




**B - Gates**  
Schengen Departures ONLY!



**C - Gates**  
NON-Schengen Departures ONLY!




**D - Gates**  
Schengen & Non-Schengen approved for ALL gates




**Fictional Virtual Airlines**

**If you REALLY have no idea where else to park**

ONLY IF Flying NON-Schengen A-Gates  
  
 All Airlines from A - Gates

**E - Gates**  
Schengen & NON-Schengen Approved for E70-E90



**F - Gates (F1-F9)**  
Schengen & NON-Schengen Approved on stand F1-F4  
Schengen Departures ONLY stand F5-F9



**F - Stands (F89-F98)**  
Schengen & NON-Schengen Approved from ALL Stands



**H - Stands**  
Schengen & NON-Schengen Approved from ALL Stands

**Operating a HEAVY aircraft on a SCHENGEN flight**  
**IF B10 + E22 is occupied**  
**VIP or Private flights**

**IF Stands F1-F9 is full**  
**F - Gates (F1-F9)**  
 Schengen & NON-Schengen Approved on stand F1-F4  
 Schengen Departures ONLY stand F5-F9



or F1+F4 is occupied for NON-Schengen Departures

**ALPHA**

Return to Briefing

Notes:

Pushback from A4, A6 and A8 should be to J facing EAST  
 Pushback from A25-27 should face east  
 Pushback from A12-A17 may face either way depending on traffic  
 Pushback from A7, A9 & A11 may go to "Z" or "Y" facing Southeast  
 Always advise able for "CUSTOM PUSHBACK" if possible  
 All gates are SCHENGEN. If flying to NON-Schengen go to "D-gates"  
 PROP aircraft ONLY on A7 & A9

PROPELLER Aircraft on A-Gates should park

A25-A34

JET Aircraft on A-Gates should park

A4,A6,A8 + A11-A23

alsieexpress

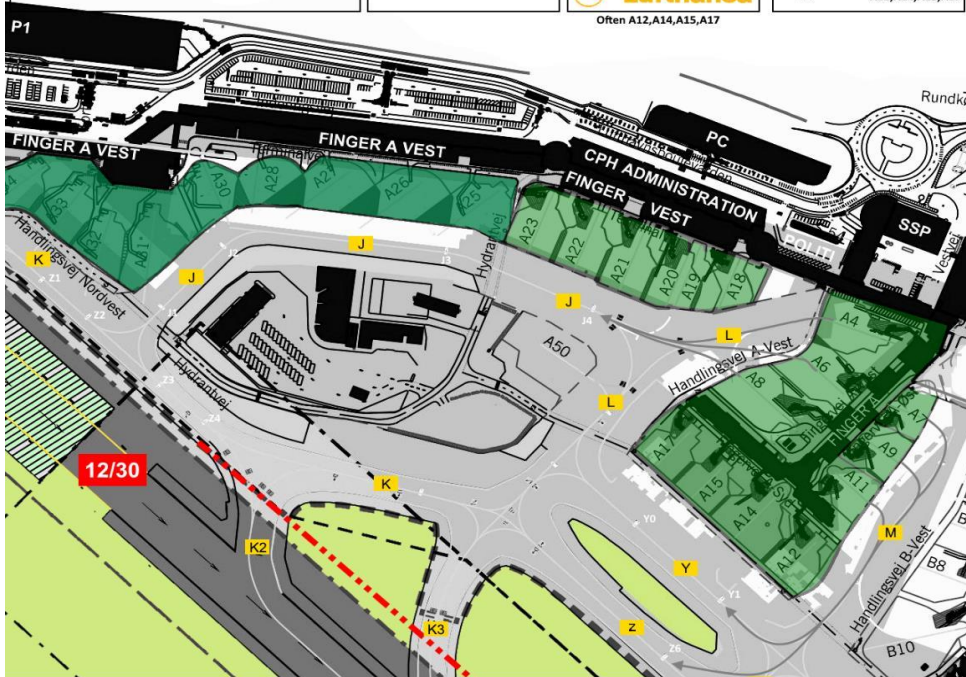
A9 or A11

Eurowings Dash 8 Usually A26

Luxair Dash 8 Usually A25

brussels airlines SWISS Austrian Lufthansa Often A12,A14,A15,A17

DAT PROP A7 JET A12,A14,A15,A17



**BRAVO**

Return to Briefing

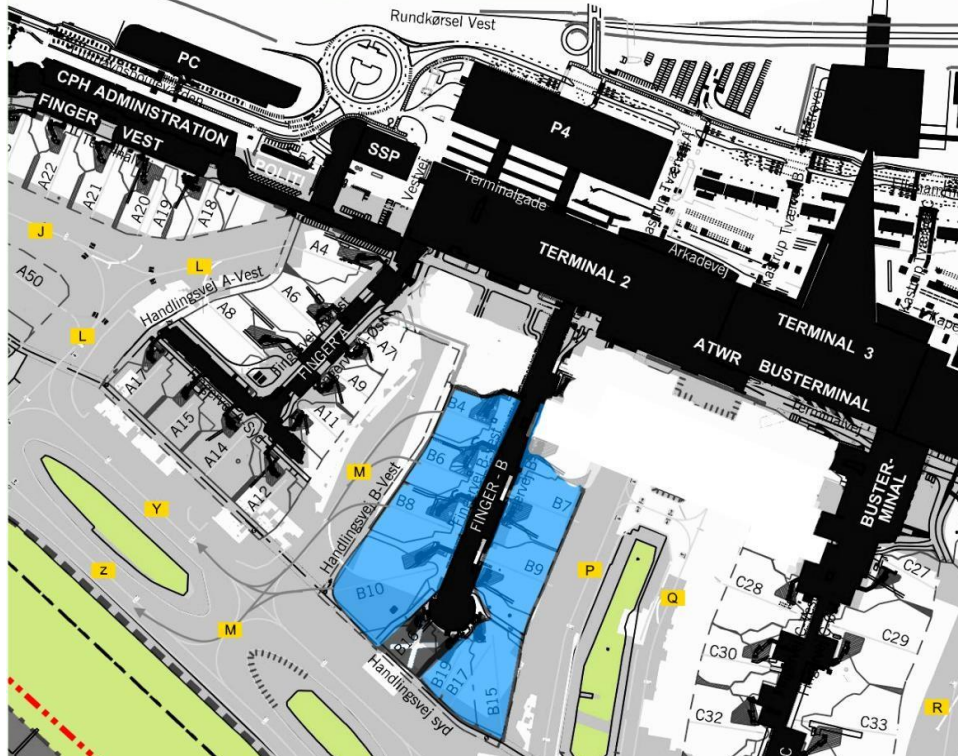
Notes:

SCHENGEN only!  
 B15 is NOT approved for A321. only A320 or smaller  
 B15 is not available.  
 B10 is usable for ALL SCHENGEN HEAVIES REGARDLESS of airline  
 Pushback from B4,B6,B8 & B10 may go to "Y" or "Z" facing east  
 Always advise if able "CUSTOM PUSHBACK" when parked at "B" gates

Mainly JET Aircrafts park here. If SAS PROP go to "F" or "E" if Eurowings go to "A26"

air greenland Parks exclusively on B10 if occupied use B17

ICELANDAIR 757-200 approved for B7,B8,B9,B10,B17 757-300 approved for B7,B9,B10,B17



NOTE: If B is full. Go to A

**CHARLIE**

Return to Briefing

Notes:  
Pushback from C27 must be to "S" or "R" face North  
Pushback from C29 must be to "S" or "R" face North  
UNLESS C29 is occupied by a HEAVY aircraft  
MEDIUM aircraft are allowed to park on any stand  
ONLY NON-Schengen departures here.  
SCHENGEN departures should be relocated to "D" gates

**What gates are what?**  
MEDIUM: C27,C30  
HEAVY: C28,C29,C32-C39

**SAS + norwegian**  
ONLY LONG HAUL and  
NON-Schengen destinations  
For SCHENGEN SAS goes to "B" or "D"  
or Schengen NAX goes to "A" or "D"

**HEAVY Restrictions**

**B77W + B744**  
May NOT park at C28

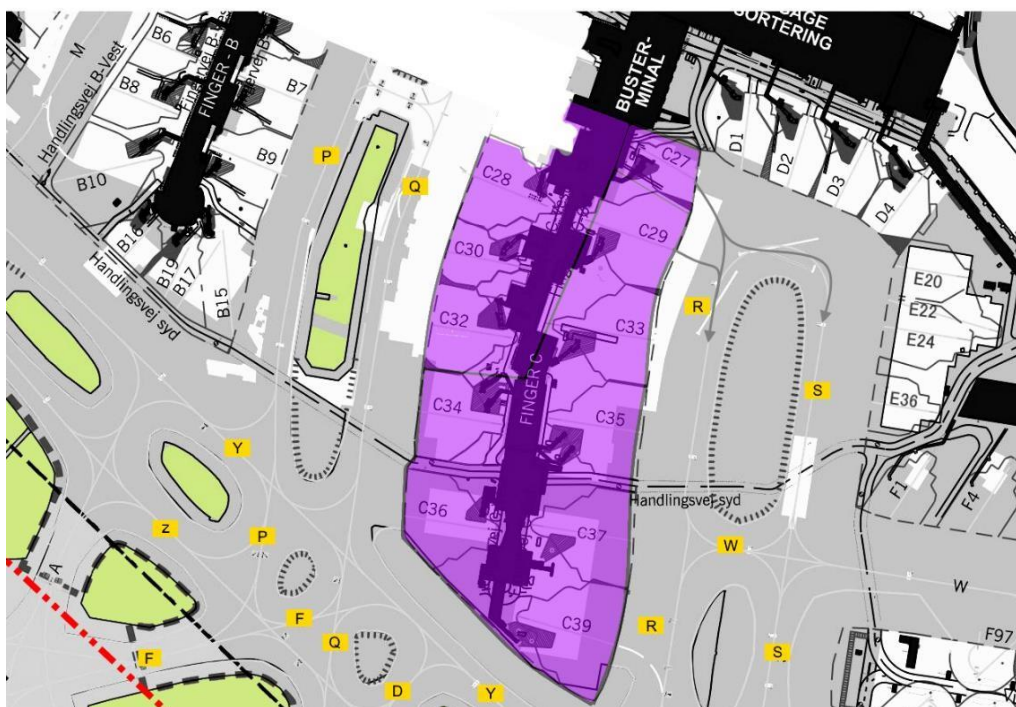
**B748 + A388**  
May ONLY park at C39  
If Occupied  
go to "E22" or "E71"

**BRITISH AIRWAYS**

Parks at C27 at all times if available  
if 27 is NOT available go to C28,C29 or D1

**Emirates**

Parks at C39.  
All A/C types incl. A388 approved



**DELTA**

Return to Briefing

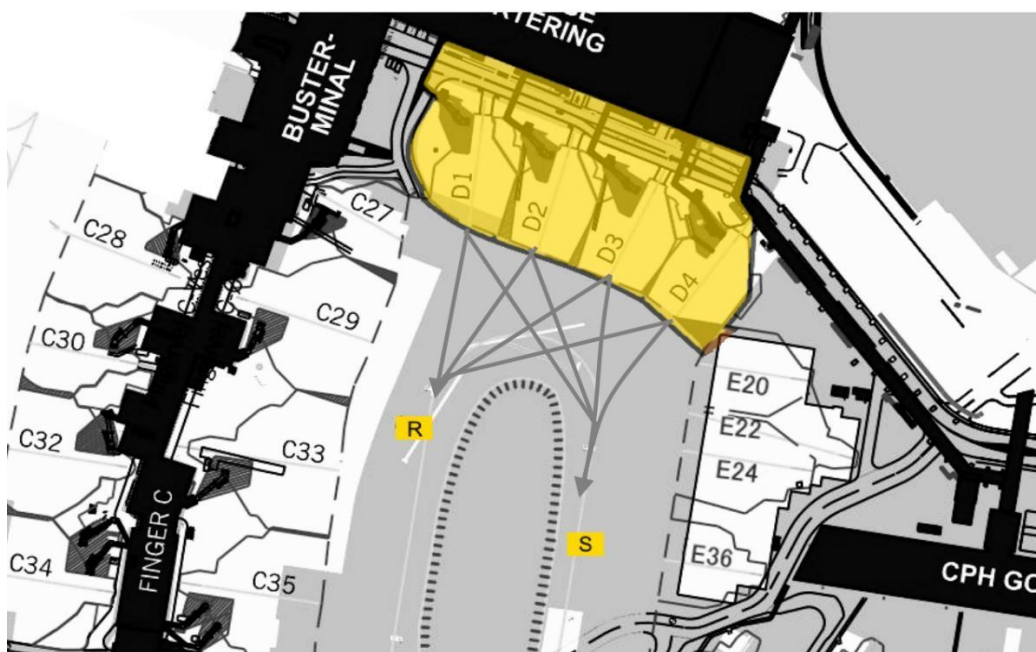
Notes:  
If you KNOW you will do a SCHENGEN/NON-SCHENGEN  
changeover (e.g. you fly EGKK-EKCH-EDDF) ADVISE  
controller you request a "D-gate". He will NOT know

ALL Pushbacks MUST be done to "R" or "S" face north!

If all D-gates are full, consider relocating to "E"

**norwegian SAS**

D-Gates normally used when an aircraft:  
Comes from **SCHENGEN** but leaves to **NON-Schengen**  
comes from **NON-Schengen** but leaves to **Schengen**



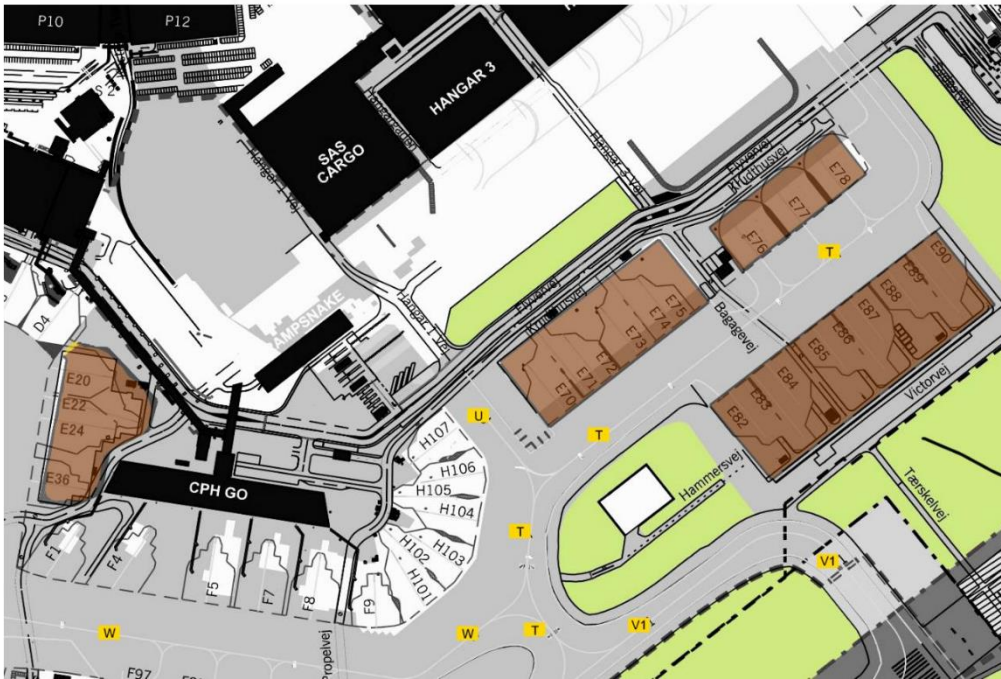
**ECHO**

Return to Briefing

**Notes:**  
Pushback from E20,E22 & E24 ALWAYS face North  
From E70-E90, expect taxiout via "T" & "W"

If in doubt where to park  
there is always space  
at "E-Gates"  
  
"E71" is specially approved for  
B748 & A388

**SAS**  
CRJ and ATR fleet are  
relocating to "E" stands  
  
**SCHENGEN:** Use E20-E36  
**NON-SCHENGEN:** Use E70-E90



**FOXTROT**

Return to Briefing

H102 & H105 is approved for heavies  
and supports either SCHENGEN or  
NON-SCHENGEN

Only PROPELLER aircraft can hold at F89-F98  
If you are **widerøe** or **airBaltic**  
but flying JET, revert to "A-gates"  
  
F90-F98 is "self-manouvering" meaning  
NO PUSHBACK

If flying **NON-Schengen**, use ONLY F1 & F4  
If F1 & F4 are occupied revert to H101 & H103

